

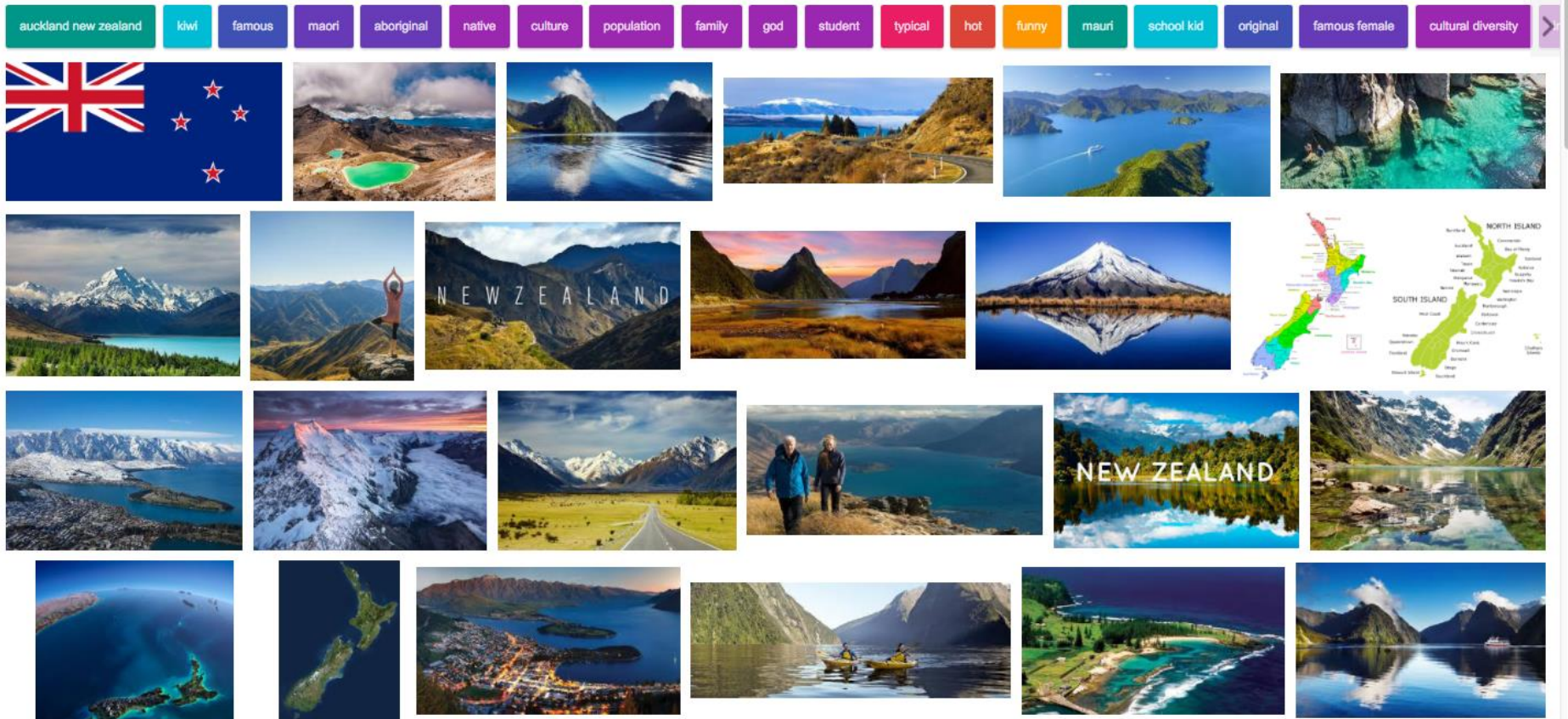


Exploring the globe— mobility of international exchange students to New Zealand universities

What does New Zealand (universities) offer?

Mark Lokman, Sciences, University of Otago

New Zealand: what our internet browsers tell us.....



NZ universities: inbound exchange

- Natural beauty / the outdoors and work/life balance
- Cultural: Maori and Pacific Island
- Rugby opportunities
- Student experience
- Specifics about the location (e.g., capital city; re-build)
- Specifics about academic quality (e.g., world / NZ rankings)
- English language immersion (!)

How “New Zealand” sees itself.....

Choose
New Zealand

Move
to New Zealand

Live
in New Zealand

Work
in New Zealand

Study
in New Zealand

Invest & Innovate
in New Zealand



Choose New Zealand

New Zealanders believe life is for living. It's about balancing a good day's work with time for family and friends.

[Home](#) > [Choose New Zealand](#)

Choose New Zealand
Balanced lifestyle
Safe & Secure
Family friendly
Clean & beautiful
A warm welcome
Compare New Zealand >
Regions & cities >



Balanced lifestyle

Get a career. And a life. New Zealand's work-life balance is envied around the world.



Safe & Secure

Explore the everyday peace of mind we enjoy here in New Zealand.



Family friendly

See why so many Kiwis return home when it's time to start a family.



Clean & beautiful

Explore the natural beauty that makes New Zealand such a lovely place to live.



A warm welcome

Discover the natural warmth and hospitality that New Zealanders are famous for.



Compare New Zealand

Find out how life in New Zealand might compare to where you're living now.

Outbound Taiwan – choosing destinations

(the '*where*' question)

- Country choice
 - Language, (indigenous) culture
 - Word of mouth
- Academic programme
- Financial considerations
- Other?

Destination New Zealand - Study options

- Pathway students
- Degree programmes
- Articulated / joint degrees
- Student exchange (indigenous peoples) / Study Abroad
- Research collaboration / MoU
 - graduate student mobility
 - internships
- Study-to-work programmes
- English language schools

Sources

Institutional exchange offices (statistics, survey outcomes)

Institutional annual reports / websites (statistics)

Universities New Zealand (statistics)

Ministry of Education (statistics)

Graduate students (movie clips)

www.studyintaiwan.org/

