

Higher education and research organization in France

Jean-Pierre Vinel
President
Université Toulouse III – Paul
Sabatier

A short history :

◆ XIII century : creation of universities in Paris (1215), Toulouse (1229) and Montpellier (1289)

◆ 1793: the Revolution closes the universities

◆ 1794 : creation of higher education schools (Grandes Ecoles such as Polytechnique or ENS)

◆ 1968: Faure's law

◆ 1984 : Savary's law

◆ 2007 : LRU law

◆ 2013 : ESR law

Aiming to :

students

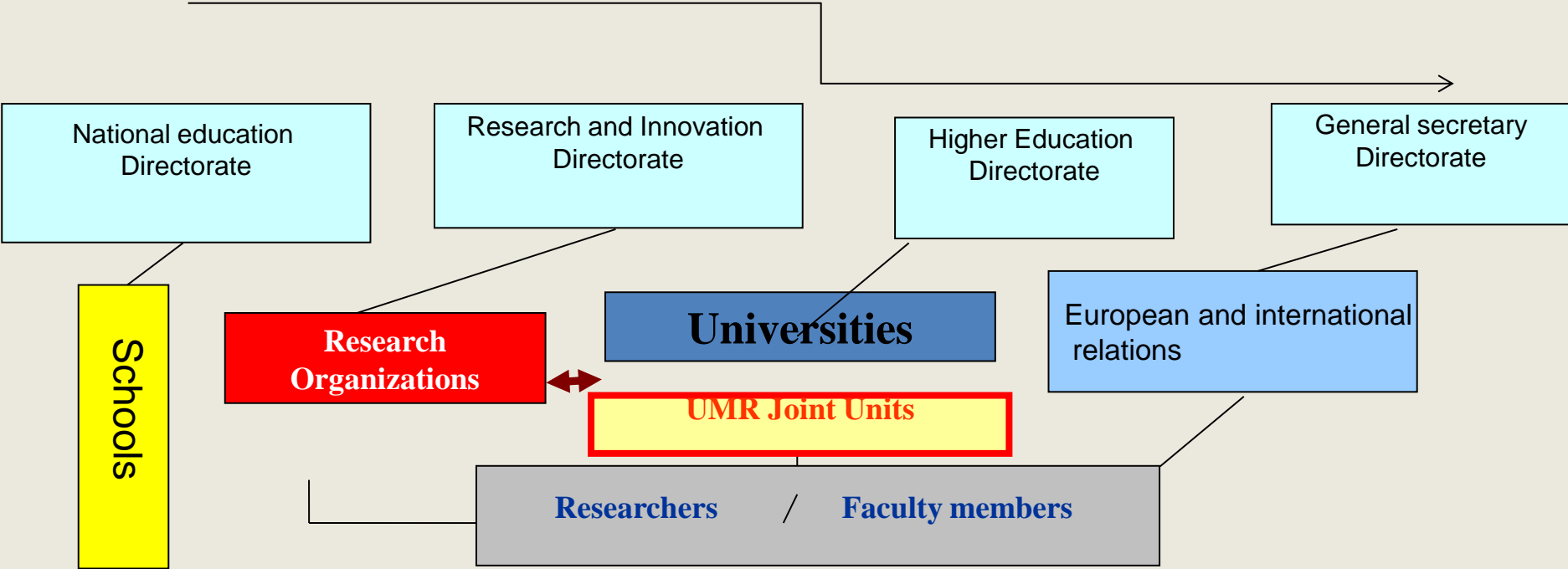
- deal with a huge increase of the number of
- increase the autonomy
- comply with the 3 step programs in Europe
- improve academic research
- foster consortia of higher education structures

GENERAL FRAMEWORK

French Ministry of National Education Higher Education and Research

**Minister for National Education, Higher Education
and Research**
Mme Najat Vallaud-Belkacem

Secretary of State for Higher Education and Research
M, Thierry Mandon





Universities and higher Education schools

More than 3 500 public or private institutions :

- 73 universities and linked establishments (70 % of the students)

- 224 schools of engineering (some are inside university)

- 120 schools of Art

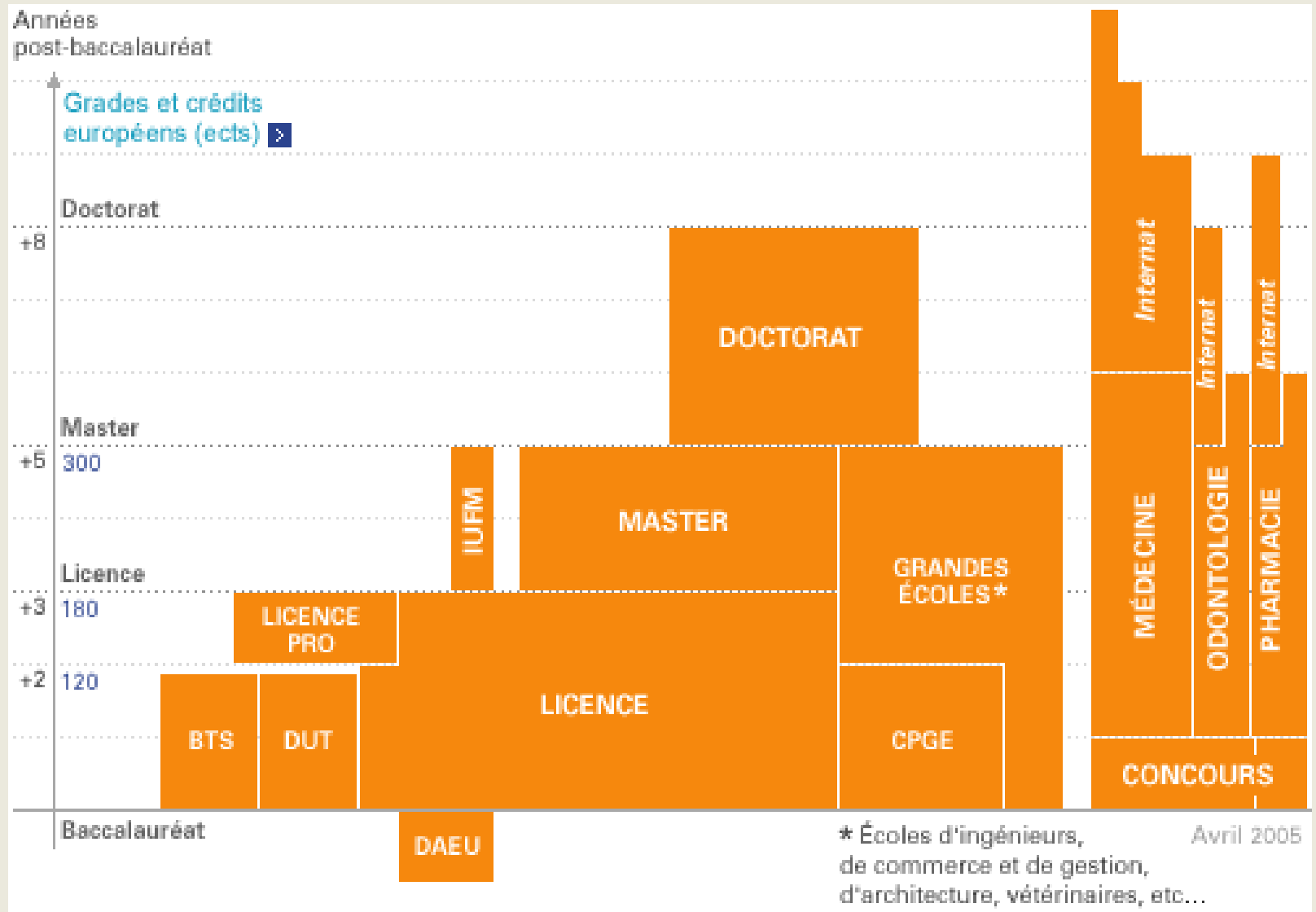
- 220 Business and management schools

- 20 schools of architecture

- 3000 other schools and institutes



The European education system

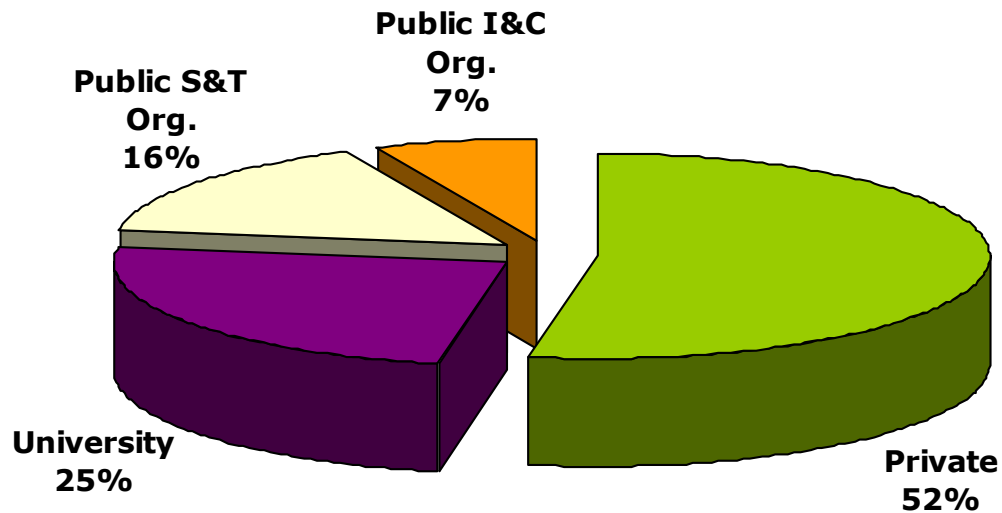


EUROPEAN CREDITS

- ❑ European Credit Transfer System (ECTS)
- ❑ 1 ECTS credit = 25-30 working hours per student
- ❑ One year = 60 ECTS = 1 500-1 800 working hours
- ❑ European System : Bachelor : 180 ECTS / M (B+5) : 300 ECTS

Research Performing Organizations

The 206 000 French Researchers



Public S&T Organizations (9)

CNRS – general

INRA – CIRAD - agriculture

INSERM - health

INRIA – informatics

IRD – development

Public I&C Organizations (15)

CEA - nuclear

CNES - space

BRGM - mining/geol.

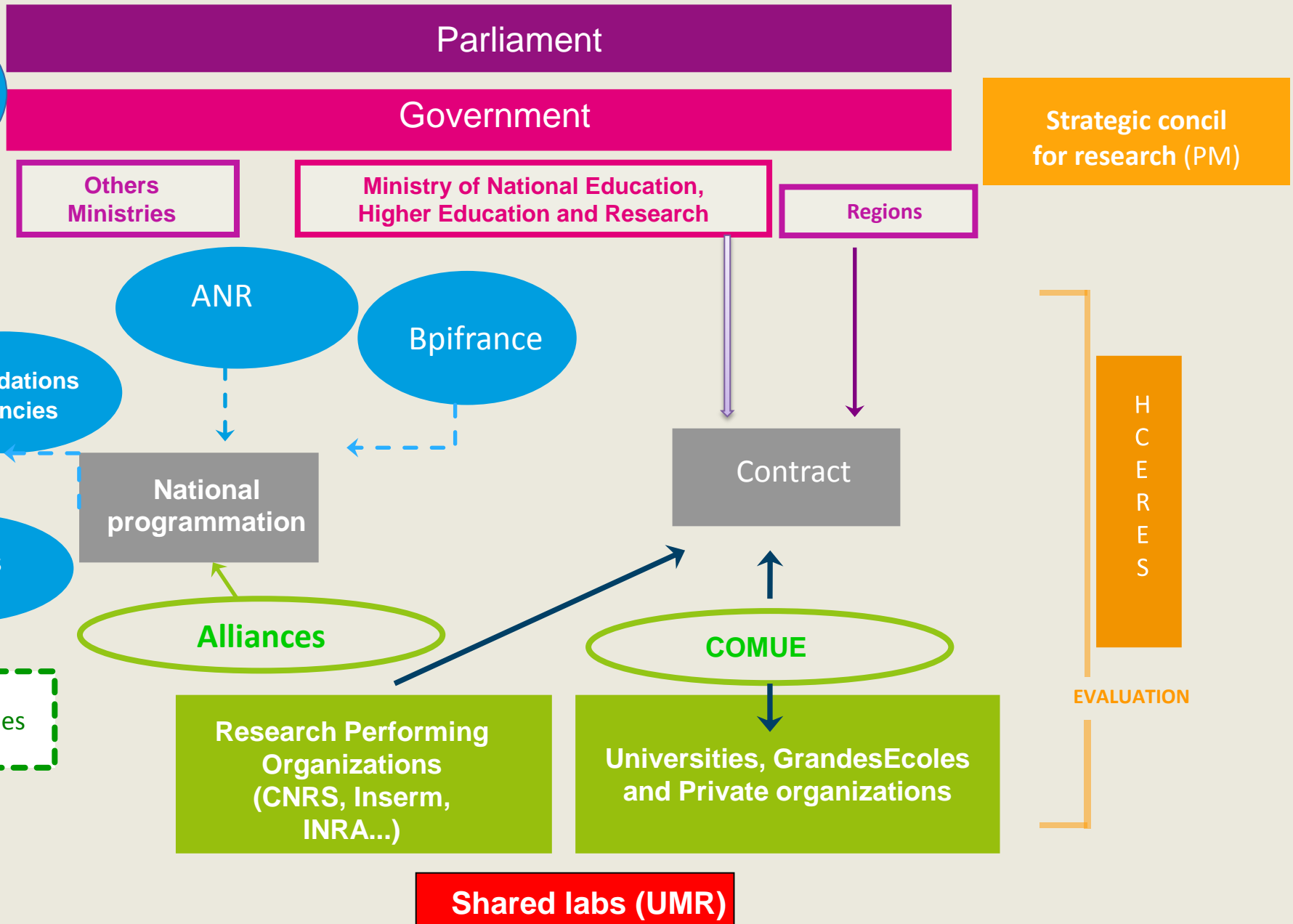
Nonprofit institutions

Pasteur Institute - health



French organization in R&D

European Research Council

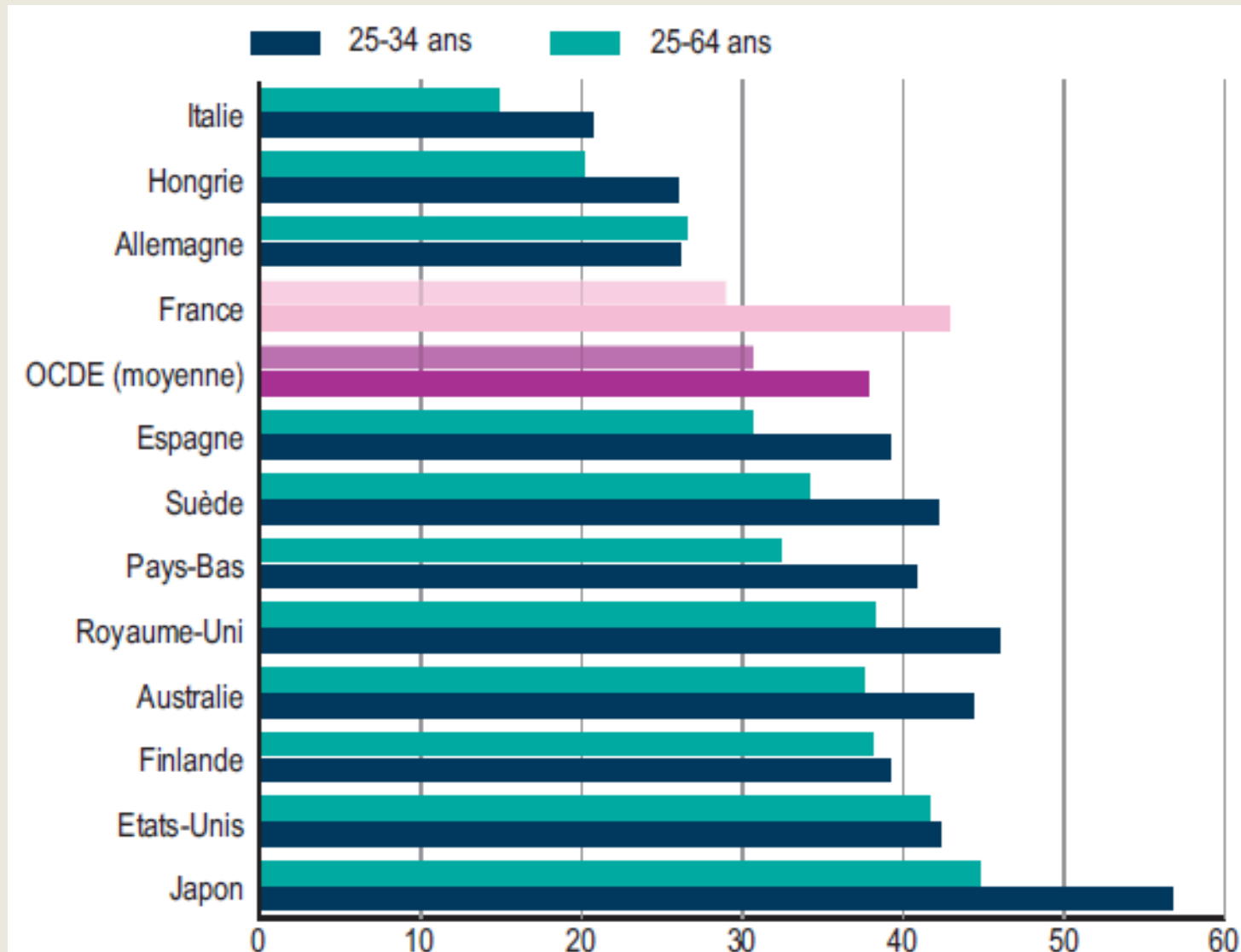


Human Resources

Total: **402 300** full time equivalent persons

- **238,000** persons working for research in private labs (including **100 800** scientists).
- **163,400** persons working for public research including
 - **51 185** faculty members in universities
 - **45 743** scientists in public research institutes
- **12 000** new doctors (PhD) every year (8,000 in sciences and 4,000 in humanities and social sciences).

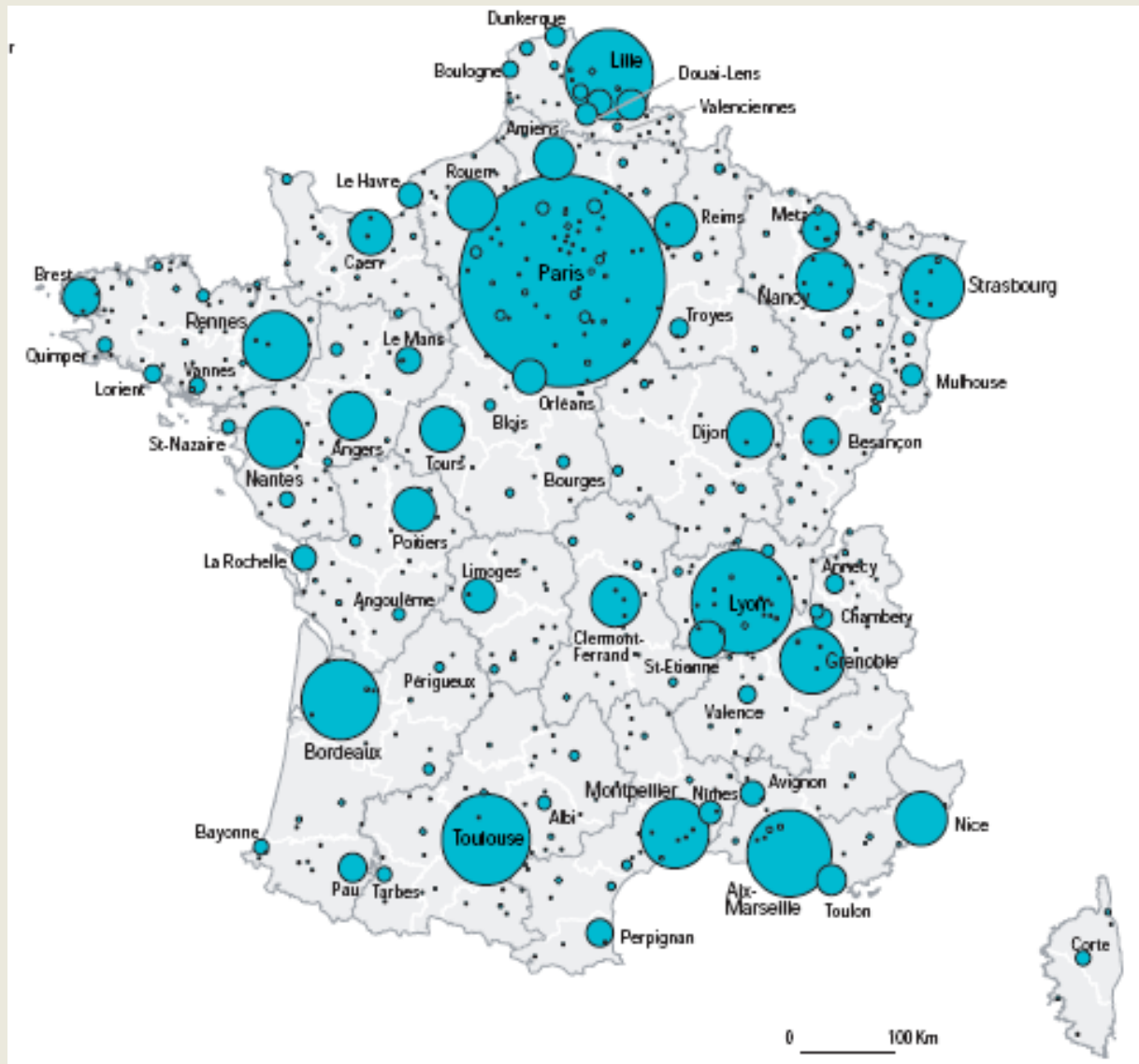
% of the population with a Higher Education Diplomas



2 422 900 students in 2013

- ❖ **62% in Universities**
- ❖ **18% in private Universities or Schools**
- ❖ **12% foreign students (75% in universities)**
- ❖ **42% thesis were presented by foreign students**
- ❖ **90% success in professional integration with a Master, 91% with a bachelor, 93% with a MBA, 96% with a engineer diploma**
- ❖ **13 K€/student (L&M), 110K€ /PhD, payed by citizens**

Students : 2.4 million (Paris : 26%)



TERRITORIAL ORGANISATION

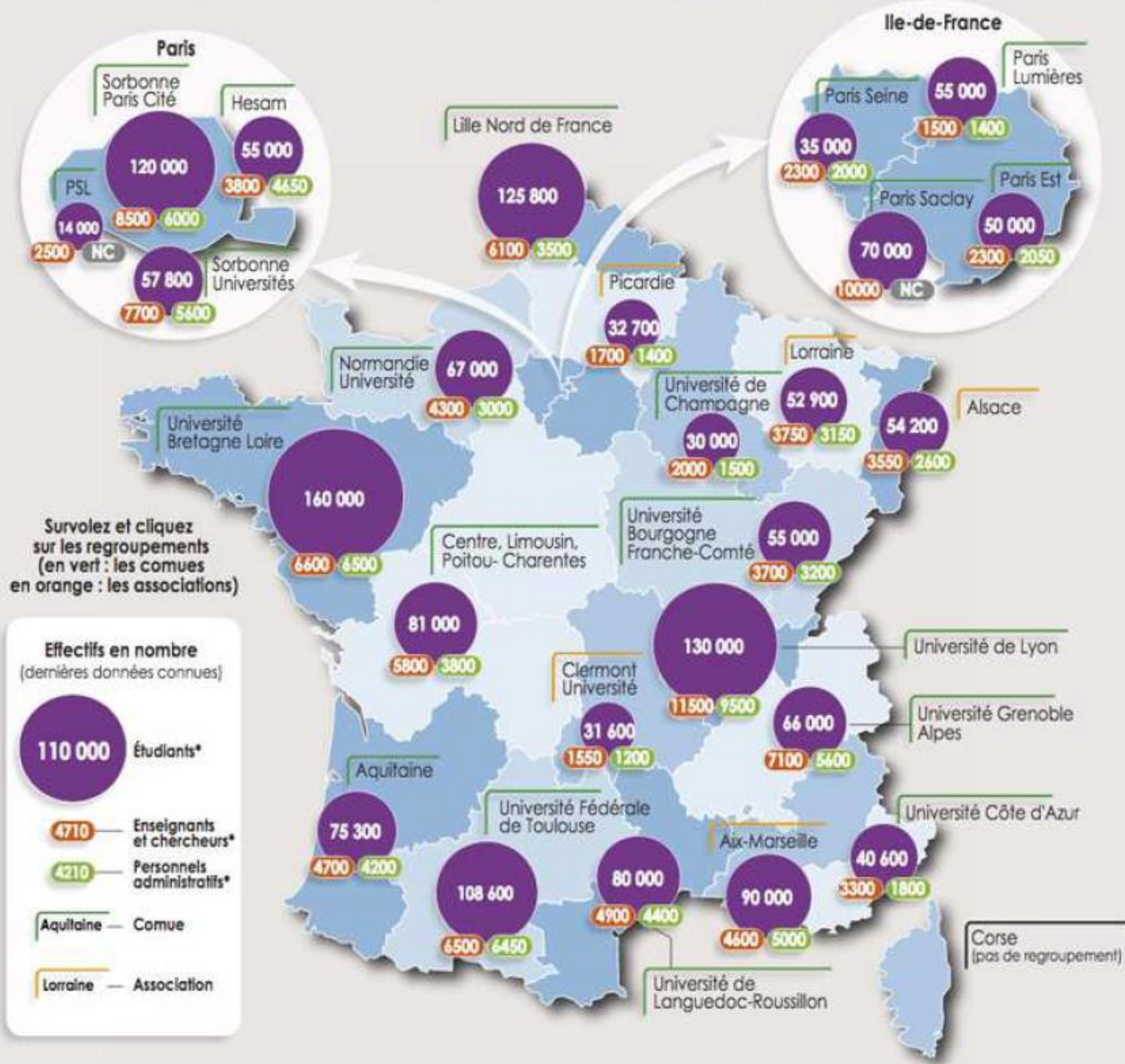
COMUE

Communauté

d'universités

et d'établissements

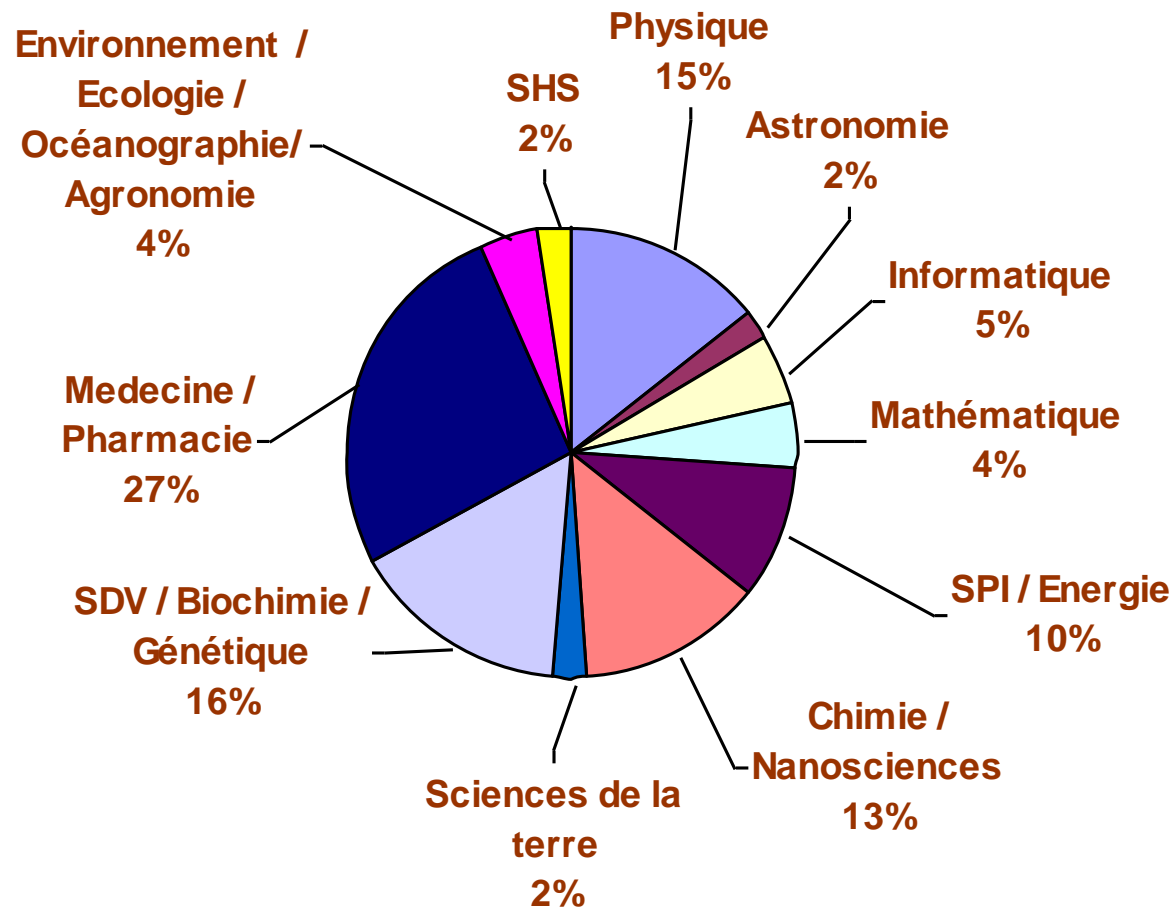
LA CARTE DES REGROUPEMENTS UNIVERSITAIRES



V. Research organisation

French Publications 2008-2012

Publications françaises 2008-2012



Conclusions

:

French university in 2020

- ◆ - Universities able to combine vocational system and life long learning in all fields,
 - ◆ - opened on society and promoting pluri-disciplinarity
 - ◆ - with increased student mobility (from 10% to 50% ?)
 - ◆ - creative in education, research & innovation strategies
 - ◆ - strengthening the whole chain of research and innovation (from basic research...)
- for the economical development : toward an ecosystem of HE-R-I